

DMC 8 Hour Refresher Computer Set Up & Support Information

Here is the link to DMC's Electronic Modules:

<http://www.laidyandray.ca/dmc/>

"Very educational,
lots of applications
for us to use on
our jobs to help
increase and close
sales."

Account Representative,
Colorado

Laidy and Ray Consulting Inc.

L
R

Laidy Routledge and Ray Bushfield
Brockville, Ontario, Canada
613-342-1914
info@laidyandray.ca

Home Laidy Ray Services Contact Us

DMC Training & Downloads

NEW!
DMC 8 Hour Refresher
PLAY NOW

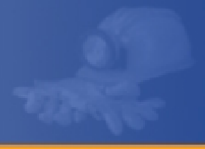
DMC Company Orientation
PLAY NOW

Building better businesses one person at a time.

Website maintained by Taira Kirkland © 2006-2009. Laidy and Ray Consulting Inc. All Rights Reserved. Privacy Policy

Click on
"Play Now"





DMC 8 Hour Refresher Computer Set Up & Support Information

DMC 8 Hour Refresher Login

Please enter your First Name, Last Name and Password to view the 8-Hour Refresher Course Materials.

First Name:

Last Name:

Password:

**Your Password is the
last 4 digits of your SSN
(or SIN for Canada)**





DMC 8 Hour Refresher Computer Set Up & Support Information

Welcome to the DMC 8-Hour Refresher Course

Welcome taira!

Thank you for participating in our 8-Hour Refresher course.

This training will require approximately 8 hours of your time. During this training, we will be reviewing vital safety material, seeing videos and answering questions about the topics we cover. At various points, we will also suggest stretch breaks.

Let's look at how this course works...

Step 1: Viewing the Safety Modules

There are 10 modules that you are required to watch. The "Previous", "Next" and "Exit" options appear in the top right corner of each module. Simply click on "Previous" to review the prior screen. Click "Next" to advance to the next screen and click "Exit" to leave the module. You may also temporarily minimize the screen if necessary.

Step 2: Taking the Quiz

After modules 2-10 you will be directed to answer questions on the topic you have just viewed. Your attendance and responses will be recorded and reviewed.

Problems? Questions?

If at any time you experience technical issues, or have a question, please contact:

- Your Supervisor
- Lori Bigelo, Human Resources at (801) 908.1048
- Terry Tilley, Safety at (801) 975-1979

[Begin 8-Hour Refresher Course](#)



Read instructions and click here to begin the course.





DMC 8 Hour Refresher Computer Set Up & Support Information

You will arrive at the “Table of Contents Page”.

Your must take the modules in their consecutive order, followed by their respective quiz.



DMC 8 Hour Refresher

Hi Taira!

LOG OUT

Section 1:	Mandatory Health & Safety Standards		
Section 2:	Transportation, Controls and Communications Systems		
Section 3:	Escape and Emergency Evacuation; Fire Warning & Fire Fighting		
Section 4:	Ground Control	View	Quiz
Section 5:	First Aid	View	Quiz
Section 6:	Electrical Hazards	View	Quiz
Section 7:	Prevention of Accidents	View	Quiz
Section 8:	Health	View	Quiz
Section 9:	Explosives	View	Quiz
Section 10:	Self Rescue and Respiratory Devices	View	Quiz

Important:
You should see your first name here!

If your name appears, please begin.
Your computer settings are fine.

LOG OUT

If your first name does not appear on this page, please do the following steps to adjust your computer settings.



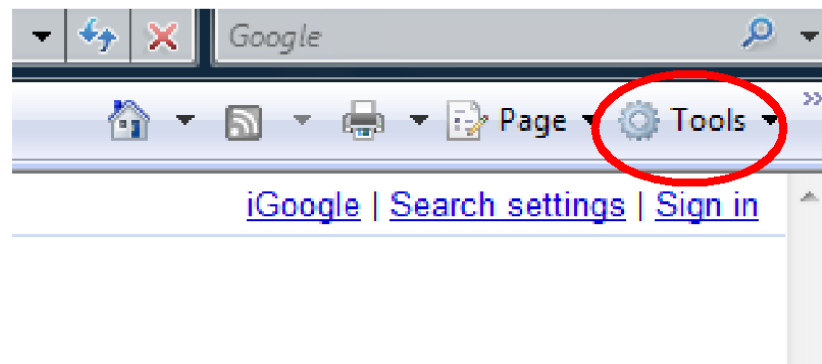


DMC 8 Hour Refresher Computer Set Up & Support Information

- 1. Close the login window / exit the electronic learning.**

- 2. From your web browser, go to:**
 - a. "Tools", then select**
 - b. "Internet Options"**

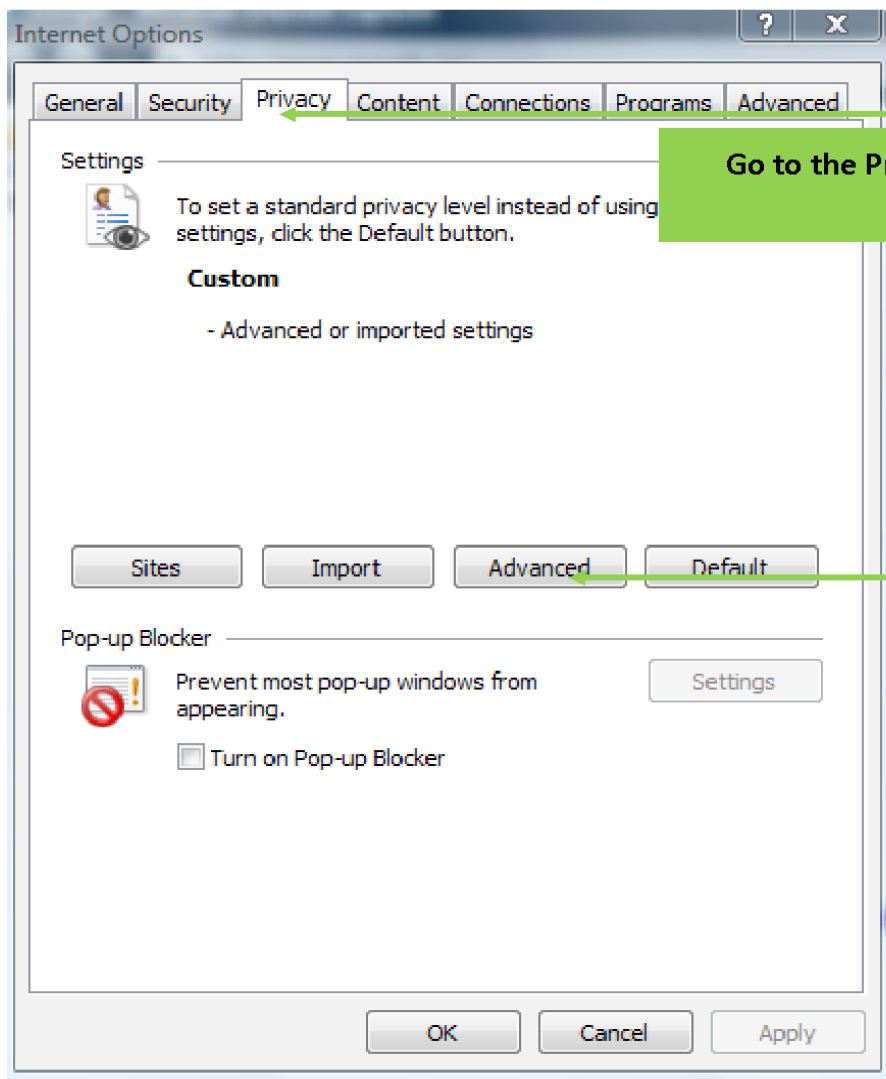
(Located in the top right corner of your computer screen)





DMC 8 Hour Refresher

Computer Set Up & Support Information

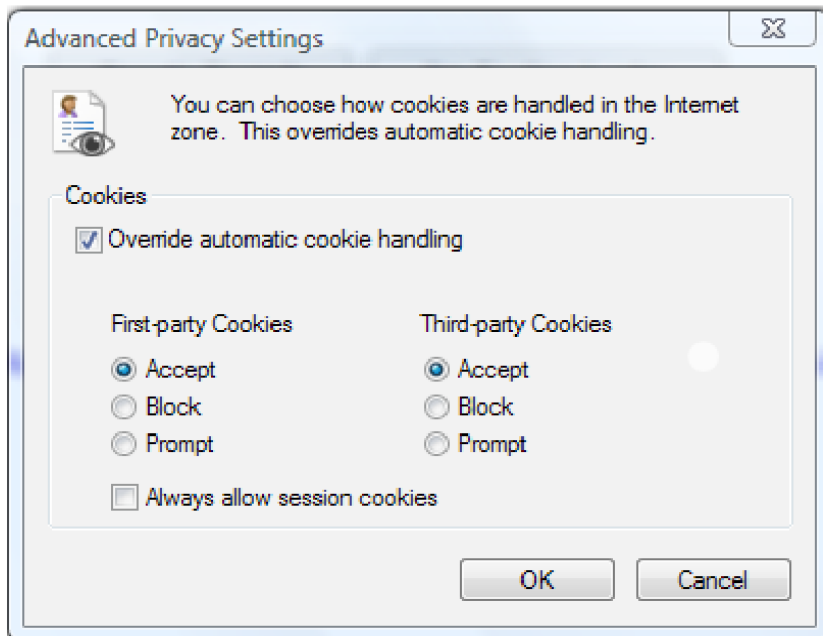




DMC 8 Hour Refresher Computer Set Up & Support Information

Please ensure “First Party Cookies” and “Third Party Cookies” are Accepted”.

Your screen will look like this:



Click “OK” and log back in - <http://www.laidyandray.ca/dmc/>





DMC 8 Hour Refresher

Computer Set Up & Support Information

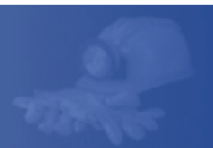
Now, when you sign in, your name should appear.

DMC 8 Hour Refresher

Hi Taira!

Section 1:	Mandatory Health & Safety Standards	<input type="button" value="View"/>	
Section 2:	Transportation, Controls and Communications Systems	<input type="button" value="View"/>	<input type="button" value="Quiz"/>
Section 3:	Escape and Emergency Evacuation; Fire Warning & Fire Fighting	<input type="button" value="View"/>	<input type="button" value="Quiz"/>
Section 4:	Ground Control	<input type="button" value="View"/>	<input type="button" value="Quiz"/>
Section 5:	First Aid	<input type="button" value="View"/>	<input type="button" value="Quiz"/>
Section 6:	Electrical Hazards	<input type="button" value="View"/>	<input type="button" value="Quiz"/>
Section 7:	Prevention of Accidents	<input type="button" value="View"/>	<input type="button" value="Quiz"/>
Section 8:	Health	<input type="button" value="View"/>	<input type="button" value="Quiz"/>
Section 9:	Explosives	<input type="button" value="View"/>	<input type="button" value="Quiz"/>
Section 10:	Self Rescue and Respiratory Devices	<input type="button" value="View"/>	<input type="button" value="Quiz"/>



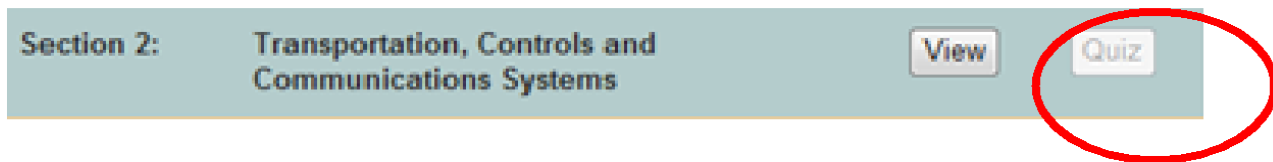


DMC 8 Hour Refresher Computer Set Up & Support Information

Understanding the Quiz Section

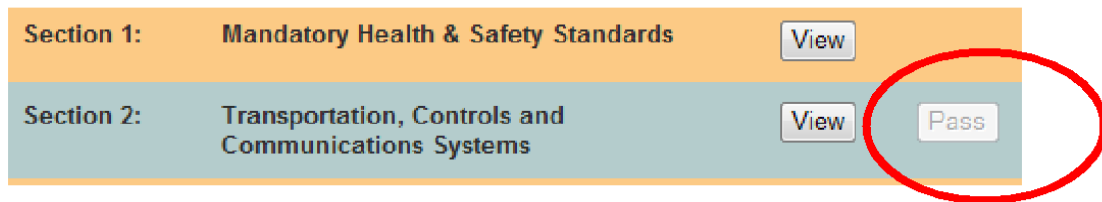
You Need to View Module and Take the Quiz:

If the "quiz" button is "grey", and indicates "quiz" this means **you need to view the module and then take the quiz.** Example:



You Passed the Quiz:

When you have viewed the modules and passed the corresponding quizzes, the "quiz" button will turn "grey", and indicate "Pass" this means **you successfully passed the quiz and there is no need to retake it.** Example:



You Failed the Quiz:

If the "Quiz" button is black, it indicates **you have watched the module, taken the quiz and failed the quiz.** You will need to retake the quiz. Example:





DMC 8 Hour Refresher Computer Set Up & Support Information


When you complete a quiz, you will be immediately given a "Pass" or "Fail" mark.

Example:

DMC
MINING SERVICES

Fueled by Safety, Driven by Success

Section 8: Health

FAILED 

Your Score	Passing Score
30 points	40 points
60 %	80 %

You did not pass.

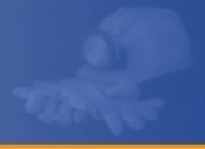
Exit

Please click on this icon:  to review your answers.

You will be shown what the correct answers are.

If you fail a quiz section, you will need to re-take and obtain a "pass".

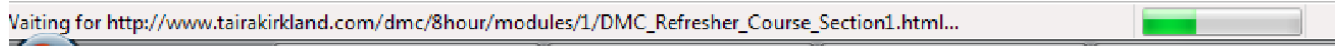




DMC 8 Hour Refresher Computer Set Up & Support Information

Loading Up

During the electronic modules, you may notice the module loading up at the bottom of your computer screen. Example:



Please allow it to load, be patient.

Wait times can vary depending on your specific internet connection.



If you experience issues logging in, or if you have any questions or concerns, please contact:

Lori Bigelow at 801-908-1048 lbigelow@dmcmMining.com

Your comments and suggestions are welcome.

Please email them to laidy@laidyandray.ca

